



CISR

ISSUE 1

Communities In Schools®

Rowan County

In Schools To Help Kids Stay In School



PROGRAMS
&
SERVICES

CISR NEWS

**COMMUNITIES IN SCHOOLS OF ROWAN COUNTY IS A REGISTERED
501(C)(3) NORTH CAROLINA NONPROFIT ORGANIZATION.**

CONTENTS

WHO WE ARE

MESSAGE FROM OUR EXECUTIVE DIRECTOR

ABOUT CISR

MEET THE STAFF

2020 STATS



Rowan County

OUR PROGRAMS

CIS MODEL

VOLUNTEERS

MENTORS

TESTIMONIAL



I think it's the student's smile that keeps me volunteering. A smile that says I get to talk to a trusted adult, a smile that says I can finally learn how to read and do that math problem, a smile that says I'm a special student because an adult friend took time to come visit me. The past two years have been very difficult on students (and volunteers). You can just see and feel the excitement of being able to volunteer again.

OUR PARTNERS

SPONSORSHIPS



CISR

IN THE COMMUNITY

Collaborations with over 30 community organizations in Rowan County



SUPPORTING

CIS SCHOOL TOOLS

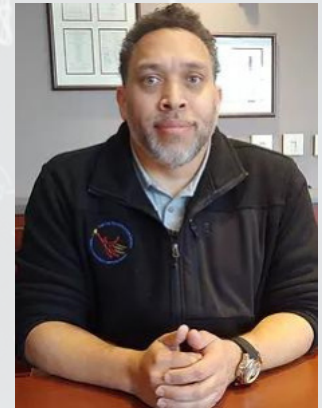
Distributes Schools supplies to over 5000 kids in the Rowan county Community

www.cisrowan.org

Message from Our Executive Director

Thank you for the 25 years supporting Communities In Schools of Rowan. And our work to provide quality data-proven programming for the students of Rowan Salisbury Schools. Because of you, CISR can provide or coordinate services that address why young people drop out, integrating student services and leveraging community resources where kids spend their days – in the schools.

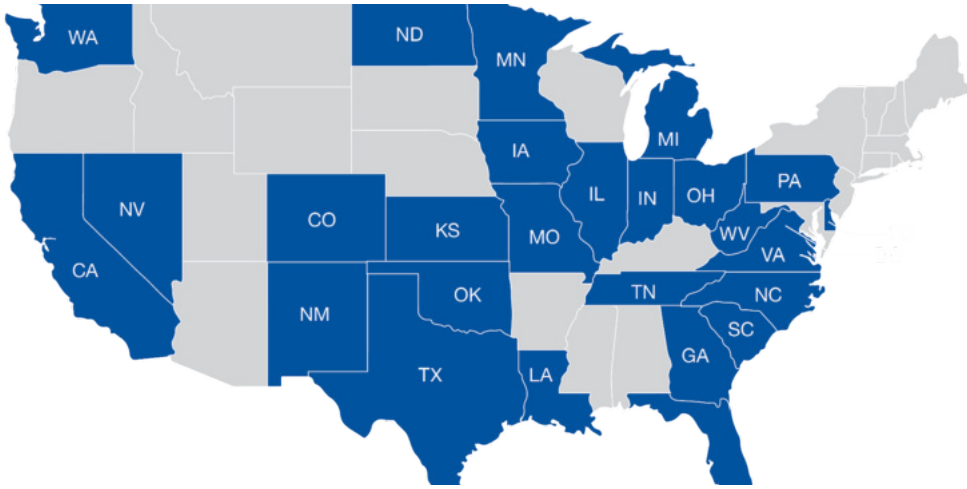
James Davis MBA



As Executive Director, my goals for Communities In Schools are many. The most important, however, is an inclusive, nurturing environment filled with opportunities for each student to meet their unique potential, be challenged, and succeed according to their success metric. Every child has a gift, and we must find ways to make those gifts come to fruition. We want each student to understand their strengths, acknowledge their weaknesses, and know what it takes to succeed daily.

We have seen the fruits of our work in the fantastic results of our current and former students as they step into the next chapter of their lives as self-assured, successful students.

Contained in this book is a brief description of who we are and our programs for sponsorship opportunities. I encourage you to learn even more about our wonderful organization and how you can support our students. I invite you to call and set up a time to tour our office or school sites and see everything that Communities In Schools offers.



BRIDGING RELATIONSHIPS BETWEEN SCHOOLS, STUDENTS AND THE COMMUNITY

Our Mission

The mission of Communities In Schools Rowan is to provide students with a community of support, allowing them to stay in school and achieve in life.

About Us

Communities In Schools® (CIS®), we believe that every student, regardless of race, gender, ability, zip code, or socioeconomic background has what they need to realize their full potential in school and beyond. We walk by their side, in their communities, to challenge the systems and barriers that stand between them and their success in life. life.

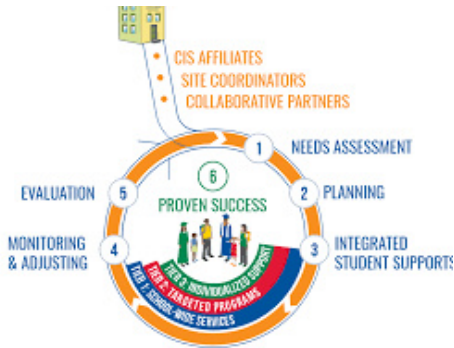
Who We Are

Communities In Schools is the largest, most effective dropout prevention organization dedicated to keeping kids in school and helping them succeed.

26 STATES+ DC
SCHOOLS AND COMMUNITY SITES
2900
STUDENTS REACHED 2021-2022

1.6 Million
Students
Served
Nationally
2021-2022

Our relationships with students and families inspire success with assistance that reaches beyond the classroom.



WHO WE SERVER



Communities In Schools Rowan operates site out of 10 school sites in the Rowan Salisbury School District

Elementary

Hanford Dole
Hurley
Isenberg
North Rowan

Middle

Knox
Southeast
North Rowan

High

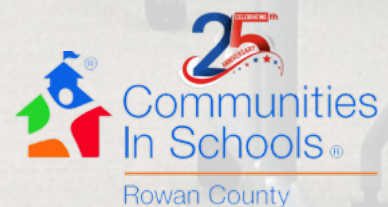
Henderson Independent
North Rowan



In Schools and Beyond
Always #AllinforKids

OUR LOCAL IMPACT

<ul style="list-style-type: none"> ■ 3349 Students Served ■ 1036 Tier One Support ■ 350 Tier 2&3 Support ■ 493 Parents engaged ■ 320 Weekly hours ■ 3349 Students Served 	<p>ACTIVE VOLUNTEERS 190</p> <p>VOLUNTEER HOURS 5730</p> <p>COMMUNITY PARTNERS 30</p> <p>VALUE OF BASIC NEED MET \$230,113</p>
--	--



Meet The Team

CIS Student Support Specialist & College Coach work daily with school administrators, teachers, parents, volunteers, and students during school. Each day, they organize study groups, tutoring, and mentoring groups within the days at school. CISR recognizes that providing additional programs to students impacted by poverty and homelessness and the children of immigrants and their families is critical. Our dedicated staff provides a solid foundation on which to build a variety of academic supports and enrichment opportunities for these students.



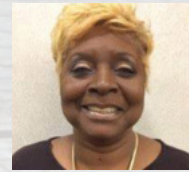
WANDA HUNTLEY
PROGRAM DIRECTOR & VOLLUNTEER
COORDINATOR



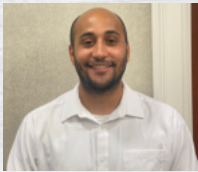
FRAN STRONG
STUDENT
SUPPORT
SPECAILIST
HENDERSON
INDEPENDENT



CRAIG THOMAS
STUDENT SUPPORT
SPECIALIST
HENDESON
INDEPENDENT



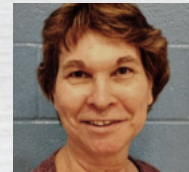
CYNTHIA RICE
STUDENT SUPPORT
SPECIALIST
NORTH ROWAN
ELEMENTARY



ZACKERY PARSON
STUDENT SUPPORT
SPECIALIST
KNOX MIDDLE



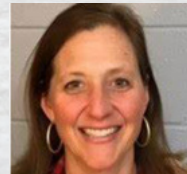
TREASURE BELL
STUDENT SUPPORT
SPECIALIST
HANFORD DOLE ELE



LYN WILSON
STUDENT SUPPORT
SPECIALIST
NORTH ROWAN
MIDDLE



TAMEKA FLORES
STUDENT SUPPORT
SPECIALIST
HURLEY ELE



FRAN LESCOE
STUDENT
SUPPORT
SPECIALIST
OVERTON
ELEMENTARY



JANE PATTERSON
STUDENT SUPPORT
SPECIALIST
NORTH ROWAN
MIDDLE



ERIC CURRIE
COLLEGE COACH
NORTH ROWAN
HIGH



BONNIE HARRELL
STUDENT SUPPORT
SPECIALIST
ISENBERG



MARLE DELCID
STUDENT
SUPPORT
SPECIALIST
SOUTHEAST
MIDDLE

NOW OPEN

The Knox Middle Learning Center offers support to students who are seeking academic assistance. Tutoring is a free service to students and takes place in one-on-one or small group sessions.



OUR

SERVICE

MAKES A

DIFFERENCE



CIS Community Baby Shower Event
Saturday, October 22nd @ Livingstone College
We say THANK YOU to the sixteen partner agencies who participated!

Many students and their families have a hard time accessing and navigating the maze of public and private services. There may be ample resources in a community, but rarely is there someone on the ground who is able to connect these resources with the schools and students that need them most.

CIS' Integrated Student Supports Model is a school-based approach to develop academic success by tackling academic and non-academic barriers. CIS serves students of all ages from K-12. These supports are provided by our CIS Site Coordinators who assess a student's needs, and then provide direct services and/or make referrals to community partners to ensure a student has everything they need to succeed in and out of the classroom.

CIS focuses on removing barriers for students at risk of dropping out, and keeping kids in schools and on the path to graduation by leveraging evidence-based practices, personal relationships, and local resources to drive results.

Communities In Schools offers in-school:

- mentoring and tutoring,
- supportive guidance to students and parents,
- school uniforms and supplies,
- referrals to community agencies
- assistance with 'emergency' clothing for students.



OUR SERVICE

MENTORING

CISR mentoring program pairs a caring adult with a child. Mentoring is a structured and trusted relationship that brings young people together with caring individuals who offer guidance, support, and encouragement aimed at developing the competence and character of the child.

TUTORING

Works with students struggling with reading, and math. To help provide additional targeted assistance helping them to bridge the gaps in their educational journey.

ASSISTANCE TO CLIENTS

Offers students and families emergency assistance with clothing, food, shoes, and other basic needs necessities. while working with families to connect them to additional resources in the community.

How You Can You Invest in a Student Today Volunteers Needed

**Mentors
Tutors
Lunch Buddies
Speakers**

Register to serve as a CIS Volunteer through our web site at www.cisrowan.org. ALL volunteers in our program, including those who are volunteering to serve through the Rowan Literacy Council programs, are required to register on our site and complete mandatory training prior to the beginning of school.

Volunteer Training
Schedule Most
Mondays 1:00 pm
Wednesday 9:00 am

Training is located at 204 E. Innes St, Salisbury, NC
28144
Suite 104

Call our office to verify training schedule changes.
704.797.0210

Please complete your background check before training. It is not required to register for this training it is open to the public.

Help Make A Difference Today By Investing in a child tomorrow

Your support is integral to the success of Communities In Schools and the students and families we serve in Rowan County. Your contributions allow us to Invest in the life of a future scholar through our ability to continue providing high-quality programming.

Levels of Investment

- Life Changers - \$10,000.00 plus
- Motivators - \$5,000.00 - \$9,999.00
- Advocates - \$2,000.00 - \$4,999.00
- Guardians - \$500.00 - \$1,999.00
- Champions - \$100.00 - \$499.00
- Friends - \$5.00 - \$99.00

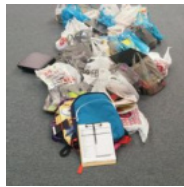
What can \$10 Buy?

hygiene kit



What can \$25 Buy?

School Supplies



What can \$50 Buy?

New shoes



What can \$75 Buy?

Coats/ Jackets



What can \$75 Buy?

College application fees for one student



What can \$100 Buy?

Emergency groceries for one family



What can \$150 Buy?

College tour with meals for two student



What can \$200 Buy?

Instructional material for tutors



Scan here to support



Investments can be made using the QR code above or by checks to Communities In Schools Rowan 204 E. Innes St. Salisbury NC, 28144 Suite 240

Meet The Board

Board Chair
Michelle Macon
Executive Director
Cornerstone Child
Development Center

Board Vice Chair
Bob Forman
Retired Educator

Board Secretary
Misty Fisher
Marketing Director
Lions Share Credit
Union

Board Member
Deja Garlin
Teen Pregnancy Prevention
Program Manager
Families First

Board Member
Robert Basinger
Rowan Salisbury
Schools

Board Member
Carol Ann Houpe .
Rowan Salisbury
Schools

Board Member
Dr. Orlando Lewis
Vice Presidents Student
Relations
Livingstone College

Board Member
Karen Alexander
AAA Architect/ Mayor
Salisbury

Board Member
Brandy Cook
District Atty, Rowan
County

Board Member
Donna Seaford
Branch Manager
State Employees Credit
Union

Board Member
Vincia Benjamin- Miller
Alumni Affairs
Livingstone College

Board Member
Dixie Dalton
Retired Educator

Board Member
April Gaither
Nurse Manager
Novant Health

Board Member
Kris Parks

Board Member
Bill Bucher
Retired School Finance

Board Member
Daniel Potts
Potts Financial Group
INC



Rowan County

Thank You



Bank of America.



NOVANT[®]
HEALTH



CIVITAN CLUB
of SALISBURY
"We care about our
community!"
www.SalisburyCivitan.org

ALFRED C.
WILSON & CO
BUILDERS
alfredcwilson.com

MOOSE
PHARMACY



CrossRoads
AUTOBODY

SAS Retail
Services

WTG
Walser Technology Group Inc.



HealthyBlue

John Basinger, Attorney At Law
Brandon Aron, DMD Family Dentistry
Board Donations-Bill & Gayla Bucher
Robert Basinger
Dale B. Basinger & Margret B. Basinger
Brent Parks CPA, PA